

# ArcTech



## Light Years Ahead In Simplicity And Style

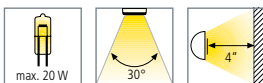
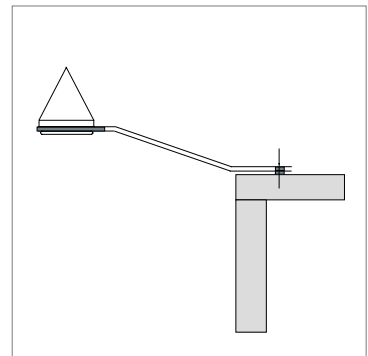
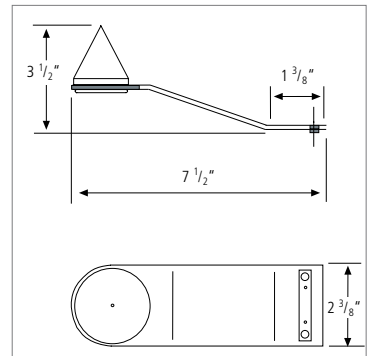
Graceful stainless steel arc. "Effortless" installation. Ready to connect with Hera plug-in system. The new ArcTech luminaire is poetry in motion over bookshelves, cabinets and entertainment areas.

### Product-Features

**4,000 hrs. Osram bulb included**

#### AL20

- High quality housing of brushed stainless steel
- Integrated halogen spot MH14, 12 V/20 W
- Convenient integration into Hera halogen systems
- Decorative cone and trim ring available in stainless steel
- Can be used with 10,000 hrs. Xenon bi-pin bulb (special order)
- To be used with Hera electronic transformers
- Incl. 79" connecting cable





## What you'll need to buy

### Spotlights

#### ArcTech

Finish	Code No.
Stainless Steel	AL20SS

### Transformers (for specs refer to pages 80 – 82)

Description	Code No.
Premium 60 Watt	UC-60FT
Premium 120 Watt	UK-120TW

### Optional accessories

Description	Refer to pages
Dimmers	refer to pages 83 – 84
Connecting cables	refer to page 85
Terminal blocks	refer to page 85