

Can-LED

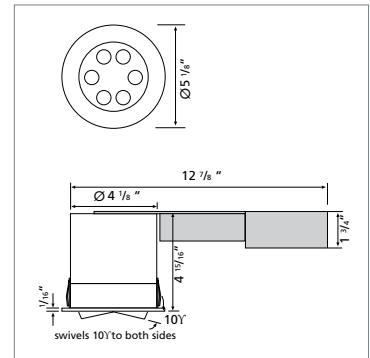


LED Spotlights For Ceiling Applications

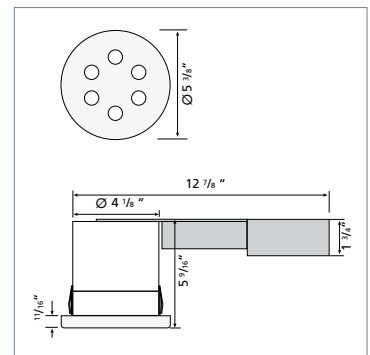
Hera's Can-LEDs are listed according to UL1598 for installation in ceilings. Can-LEDs feature a very compact ceiling can with integrated LED driver. The compact can dimensions make the spotlights suitable for new construction or remodeling. The 6 x 1 W high power LEDs provide a high light output (similar to a 50 W MR16 lamp), perfect for both, residential and commercial applications.

Product-Features

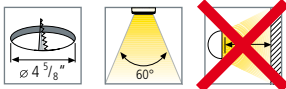
- Two attractive designs available, Can-LED SWIVEL (+/- 10 degree swivel) and Can-LED PLEXI with attractive, frosted plexiglas collar
- 6 x 1 W high power LEDs
- Recess depth 4 7/8"
- Available with cool white and warm white LEDs
- Integrated 350 mA constant current DC converter
- Available in white and stainless steel



CAN-LED SWIVEL

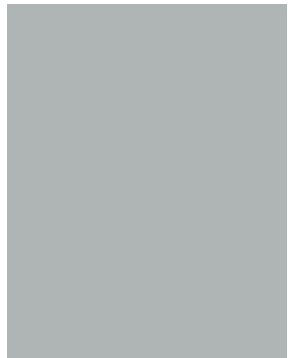


CAN-LED PLEXI





CAN-LED PLEXI



What you'll need to buy

Spotlights

Can-LED

Warm White

Finish	Code No.
White	LEDCAN6/WH/WW
Stainless Steel	LEDCAN6/SS/WW

Cool White

Finish	Code No.
White	LEDCAN6/WH/CW
Stainless Steel	LEDCAN6/SS/CW

Can-LED PLEXI

Warm White

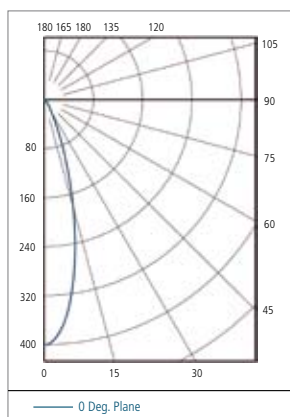
Finish	Code No.
Plexiglas	LEDCAN6/PL/WW

Cool White

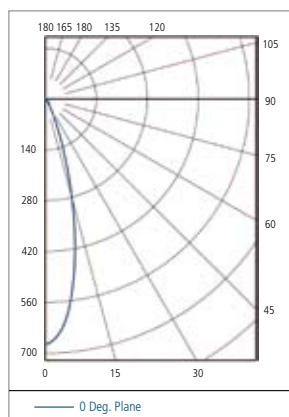
Finish	Code No.
Plexiglas	LEDCAN6/PL/CW

LED Power Supply

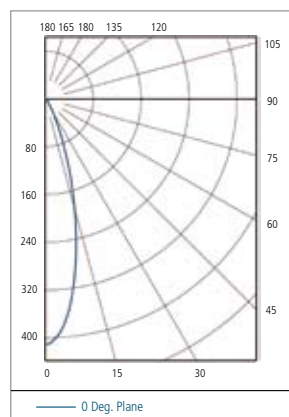
Each Can-LED comes complete with its own constant current driver



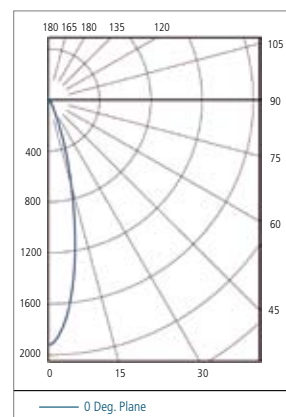
LEDCAN6/WW



LEDCAN6/CW



LEDCAN6/PL/WW



LEDCAN6/PL/CW