

Can-LED



LED Spotlights For Ceiling Applications

Hera's Can-LEDs are listed according to UL1598 for installation in ceilings. Can-LEDs feature a very compact ceiling can with integrated LED driver. The compact can dimensions make the spotlights suitable for new construction or remodeling. The 6 x 1 W high power LEDs provide a high light output (similar to a 50 W MR16 lamp), perfect for both, residential and commercial applications.

Product-Features

- Two attractive designs available, Can-LED SWIVEL (+/- 10 degree swivel) and Can-LED PLEXI with attractive, frosted plexiglas collar
- 6 x 1 W high power LEDs
- Recess depth 4 7/8"
- Available with cool white (5,500 K) and warm white (3,200 K) LEDs
- Integrated 350 mA constant current DC converter
- Available in white and stainless steel

Can-LED

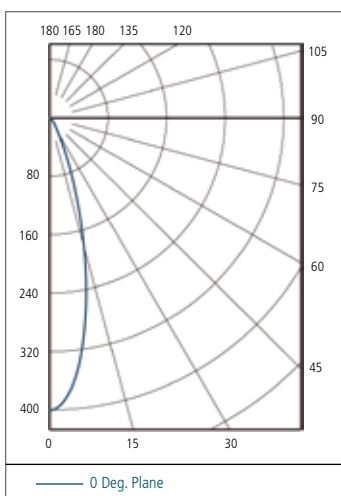
NEW



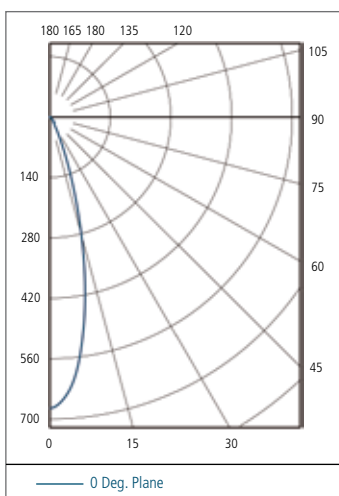
CAN-LED SWIVEL



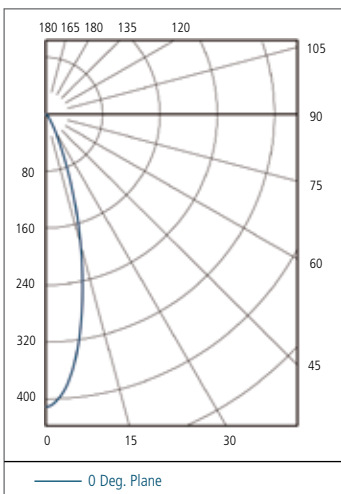
CAN-LED PLEXI



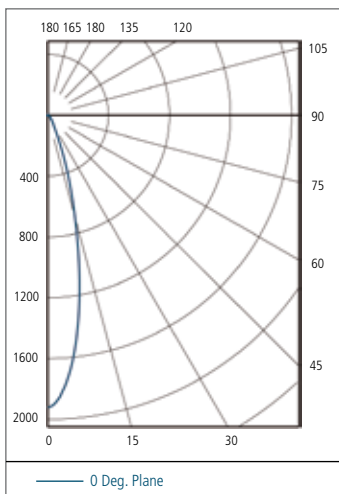
LEDCAN6/WW



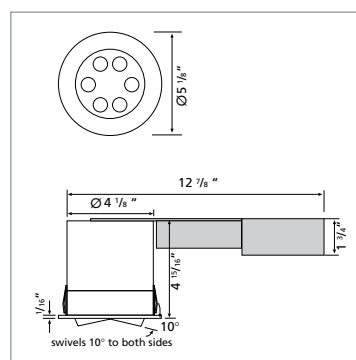
LEDCANG/CW



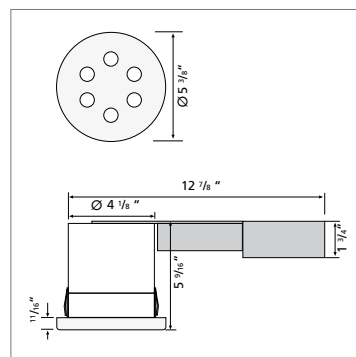
LEDCAN6/PL/WW



LEDCANG/PL/CW



CAN-LED SWIVEL



CAN-LED PLEXI

