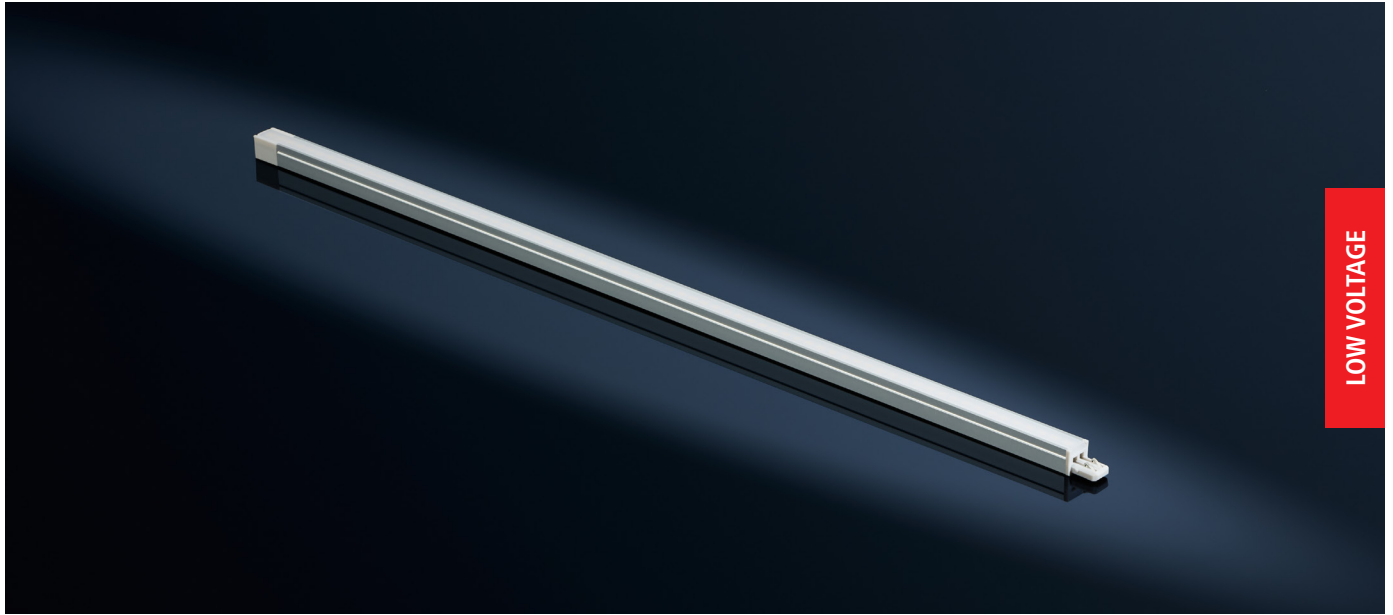


ThinStick-LED

LOW VOLTAGE



Product Description

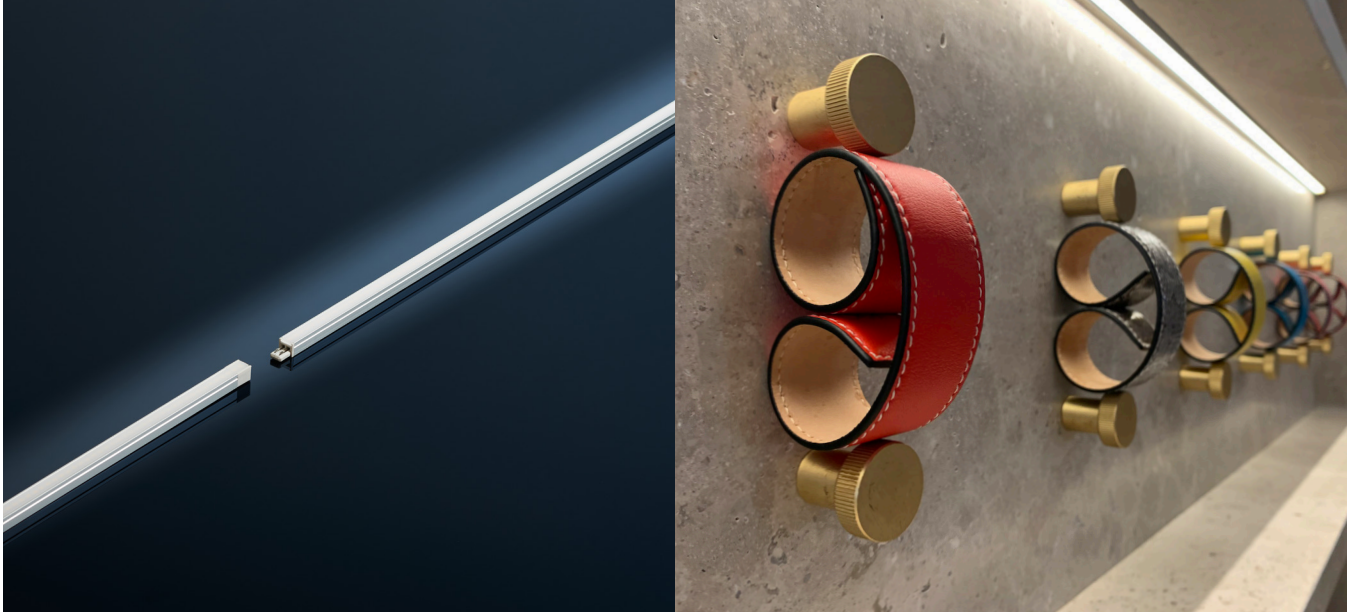
The Next Evolution of the Stick-LED Family

ThinStick-LED is a miniature, modular, linear stick, forged from our flagship best-selling product Stick-LED. It delivers high output illumination without high energy costs, all in a slim, sleek aluminum extrusion that blends away. ThinStick-LED is the perfect solution when you want to shine the light on your products above all else.

Product Features

- Available sizes:
 - 8" (2 W)
 - 12" (3.4 W)
 - 24" (7 W)
 - 34" (9.6 W)
 - 46" (13 W)
- Available color temperatures:
 - 3000 K
 - 3500 K
 - 4000 K
 - Additional color temperatures (special order)
- Built-in magnetic mounting
- Extremely small dimensions: 5/16" H x 5/16" W
- Interconnect up to 39 W in one run
- Individual runs, including cables not to exceed 18'
- Linear LED with frosted lens
- Can be recessed (flush with board) or surface-mounted
- Extremely high, even light output
- Comes with screw-in mounting clips
- To be used with 24 Vdc Constant Voltage Driver
- EPH certified to NSF/ANSI 2 for use in food zones
- 50,000 hours usable life
- Excellent CRI >94
- Efficacy >93-95 lm/W





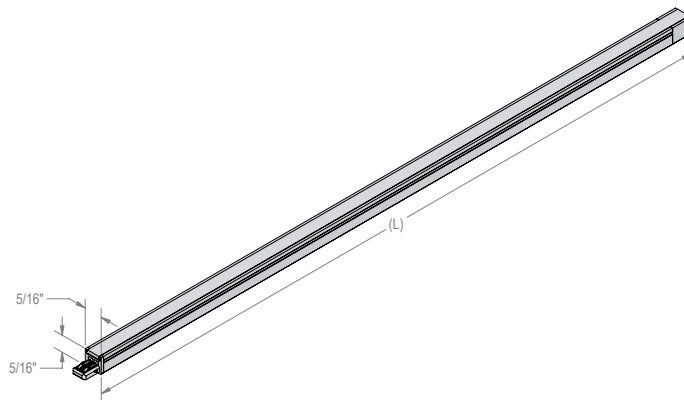
Available Options

Necessary Accessories on Page 40

MODEL	LENGTH	POWER	LIGHT OUTPUT	EFFICACY	CRI	PART NO. (3000 K)	PART NO. (3500 K)	PART NO. (4000 K)
ThinStick-LED	7 7/8"	2 W	190 Lm	95 lm/W	>94	TS/8/3000/M/N	TS/8/3500/M/N	TS/8/4000/M/N
ThinStick-LED	11 13/16"	3.4 W	320 Lm	94 lm/W	>94	TS/12/3000/M/N	TS/12/3500/M/N	TS/12/4000/M/N
ThinStick-LED	22 7/16"	7 W	650 Lm	93 lm/W	>94	TS/24/3000/M/N	TS/24/3500/M/N	TS/24/4000/M/N
ThinStick-LED	34 1/4"	9.6 W	910 Lm	95 lm/W	>94	TS/34/3000/M/N	TS/34/3500/M/N	TS/34/4000/M/N
ThinStick-LED	44 7/8"	13 W	1220 Lm	94 lm/W	>94	TS/46/3000/M/N	TS/46/3500/M/N	TS/46/4000/M/N

Compatible Drivers on Page 38

Dimensions



Low Voltage Drivers

Constant Voltage Drivers

24 Vdc Drivers



Daisy Driver, 30W
(Full Specs on Page #94)



Daisy Driver, 75W
(Full Specs on Page #95)



Daisy Driver, 96W
(Full Specs on Page #96)



Driver, 6W
(Full Specs on Page #98)

Compatibility

Constant Voltage Compatible LEDs

LINEAR

FreeCut-LED

ThinStick-LED

CStick-LED

TapeEven-LED

Curve-LED

TapeUltra-LED

TapeBasic-LED

Stick3-LED

Stick2-LED

StickVE-LED

Low Voltage Accessories

FreeCut-LED

Power Cords

FINISH	LENGTH	PART NO.
White	3"	FC/PC/3/WH
White	79"	FC/PC/79/WH

Connecting Cables

FINISH	LENGTH	PART NO.
White	3"	FC/CC/3/WH
White	6"	FC/CC/6/WH
White	12"	FC/CC/12/WH
White	24"	FC/CC/24/WH

Optional Accessories

DESCRIPTION	PART NO.
Screw-in mounting clips	FC/MC/SET
Magnet mounting clips	FC/MC/M/SET
45 deg screw-in mounting clips	FC/MC/45/SET
45 deg magnet mounting clips	FC/MC/M/45/SET
Housing End Cap	FC/EC

ThinStick-LED

Power Cords

FINISH	LENGTH	PART NO.
White	79"	TS/PC/79/WH/N

Connecting Cables

FINISH	LENGTH	PART NO.
White	2"	TS/CC/2/WH/N
White	12"	TS/CC/12/WH/N
White	39"	TS/CC/39/WH/N
Black	2"	TS/CC/2/BL/N
Black	12"	TS/CC/12/BL/N

Optional Accessories

DESCRIPTION	PART NO.
Dimming Module	STICKPSDIM/S
Dimming Controller	DIMCONTROL/EURO
Y-Cable adapter	STICKDIM/YCABLE
Remote Control Dimmer	RCPSDIM/V2
Rocker Switch	PS24V/SWITCH/RS/H
Rocker Switch, DC plug	PS24V/SWITCH/RS/DC1224/H
Terminal Block	PS24V/TB
Terminal Block, DC plug	PS24V/TB/DC/Y
24 V Occupancy Switch	PS24V/SW/OC
Sensor Switch	IRSWITCH/H
Sensor Switch, Dimmable	IRSWITCH/H/D
Power cord locking clip	CLIP/24V/CCPC